

# EQUIPMENT CATALOGUE



## INFRASTRUCTURE & SURFACE RENTALS

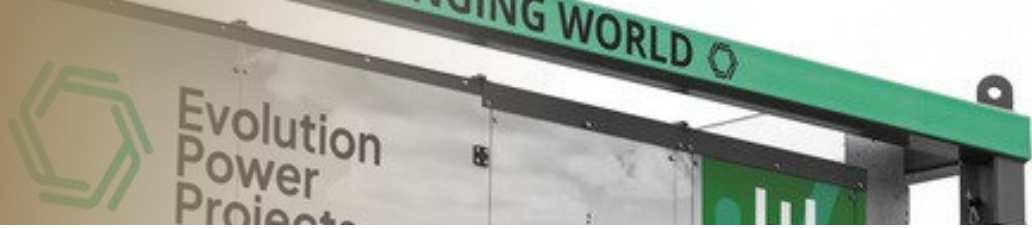
INDUSTRIAL | OIL & GAS | CONSTRUCTION

# TABLE OF CONTENTS

---



Category	Page
• Power Generation _____	3
• Power Accessories _____	8
• Accommodations _____	12
• Lighting _____	16
• Combo Units _____	20
• Fuel Storage _____	22
• Environmental _____	23
• Sewer & Water _____	24
• Fire Suppression _____	27
• Heating and Air Movement _____	28
• Scaffolding _____	32
• Walkways _____	34
• Misc. Items _____	35
• Transport _____	36
• Other Services _____	38
• Site Tours _____	39
• Locations _____	40
• Meet Our Team _____	41
• Contact Us _____	44



### 200KW MICROTURBINE

- Natural Gas turbine
- 1x 8hr service per year
- Low noise levels and emissions
- Multi turbine synchronization capabilities



### 250KW TURBINE

- Dual-mode operation with remote monitoring
- Unbeatable uptime, 1x 8hr service per year
- Multi turbine synchronization to cover load demands



### 333KW TURBINE

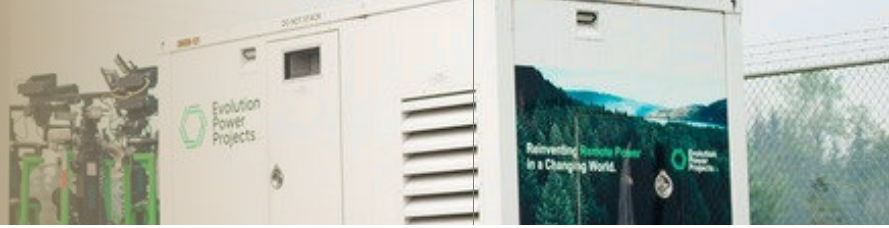
- Wide fuel gas tolerance
- Ultra low emissions
- Multi turbine synchronization to cover load demands
- Unbeatable uptime, 1 x 8hr service per year



# POWER GENERATION

## NATURAL GAS & PROPANE

Evolution  
Power  
Projects



### 30KW NAT GAS

- Can run LP or Nat Gas
- Factory installed 5 stage, 5 amp battery charger
- Weather enclosures provide sound reduction



### 160KW NAT GAS

- Trailered and skidded units
- Low noise levels
- Syncable



### 225KW & 295KW NAT GAS

- Designed for prime power operation in rental, industrial, and oil & gas applications
- Remote monitoring capabilities



# POWER GENERATION

## DIESEL - WHEELED



### UP TO 600KW

- Many models with on board fuel tanks
- External fuel tank hook-ups
- Some models include built in distribution panels



**POWER GENERATION**  
**DIESEL - SKIDDED**

125kVA

shindaiwa

kwiet



**UP TO 380KW**

- Many models with on board fuel tanks
- External fuel tank hook-ups
- Some models include built in distribution panels



# POWER GENERATION

## DIESEL - SKIDDED



### DOUBLE GEN 60KW

- Dual generators for longevity and backup
- Multiple outlets and multiple voltage outputs
- Utilize our transformer options to get any specific power requirement you may need
- Some models include onboard fuel



### DOUBLE GEN 100KW

- Dual generators for longevity and backup
- Multiple outlets and multiple voltage outputs
- Utilize our transformer options to get any specific power requirement you may need
- Some models include onboard fuel up to 3400 L



# POWER ACCESSORIES

## CORDING



### CORDING

Various lengths, amperages, and voltages



### CAMLOCKS

- Various lengths, amperages, and voltages



### WHIPS

- Customizable to many amperages and pole types





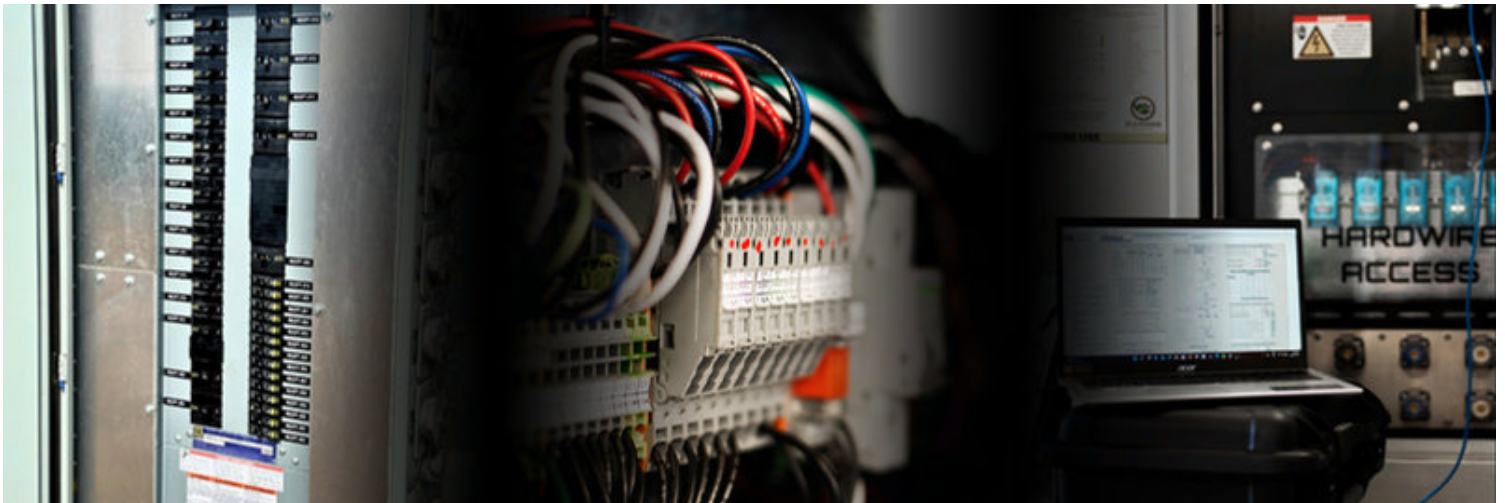
## DISTRIBUTION CARTS

- 120 / 208 & 480 volt units
- Low and High voltage equipment
- Space saving designs



## DISTRIBUTION PANELS

- 120 / 208 & 480 volt units
- Low and High voltage equipment
- Space saving designs





### **DISCONNECT SWITCH**

- Single and double disconnect units
- Multiple amp types



### **TAP BOX**

- Generator tap boxes provide a safe and efficient means of connecting commercial or industrial power with a portable or auxiliary power source



### **VFD PANELS**

- Variable frequency drive panels with soft starts



## **TRANSFER SWITCH**

- Multiple amperages and voltages available



## **UNINTERRUPTED POWER SOURCE**

- Provides backup power at 120 volts
- 20 amp for 30 minutes in the event of power failure



## **LOAD BANK**

- 450 amp



# ACCOMMODATIONS

## WHEELED



### OFFICE PULL TRAILERS

- Site portability
- Modern amenities including leather couches, microwave, mini fridge, TV / satellite



### ROUGHNECK TRAILERS

- All the amenities of home on wheels!
- Desk, dining table, TV w/ satellite, kitchen, washroom w/ shower & bedroom
- Winter capable & able to haul fully loaded



### MEETING & CONFERENCE TRAILERS

- Open space for meeting or group events
- 32 ft



# ACCOMMODATIONS

## SKIDDED



### DOUBLE ENGINEER 12WIDE

- Full living quarters with bedroom, bathroom with shower, full kitchenette, work space.
- Built with executive standards.



### DOUBLE ENGINEER 14WIDE

- Full living quarters with bedroom, bathroom with shower, full kitchenette, work space.
- Built with executive standards.
- The 14 ft model gives you that extra space for long term stays



### ENGINEER / GEO

- Full living quarters with bedroom, bathroom with shower, full kitchenette, work space. Built with executive standards.
- The Geo models include a geologist sink, oven fan, cutting plate



# ACCOMMODATIONS

## SKIDDED



### GEO / SITE OFFICE

- Full living quarters with bedroom, bathroom with shower, full kitchenette, work space.
- Built with executive standards.
- The Geo models include a geologist sink, oven fan, cutting plate



### COMMAND CENTER

- These wellsite trailers are designed to be the heart of your project with offices, meeting area, washroom, kitchenette



### MEETING SHACK

- These wellsite trailers give you space for hosting site meetings / coordination area.
- Some models include a bathroom and kitchenette
- 40 ft & 60 ft models



# ACCOMMODATIONS

## SKIDDED



### EXECUTIVE SINGLE

- Work and home concept for remote sites. Separate office and living quarters.
- Full living quarters with bedroom, bathroom with shower, full kitchenette
- Built with executive standards.



### GYM SHACK

- Remote sites can be limited, these trailers give your staff motivation and a productive option during their time off



# LIGHTING WHEELED



## 4 LIGHT

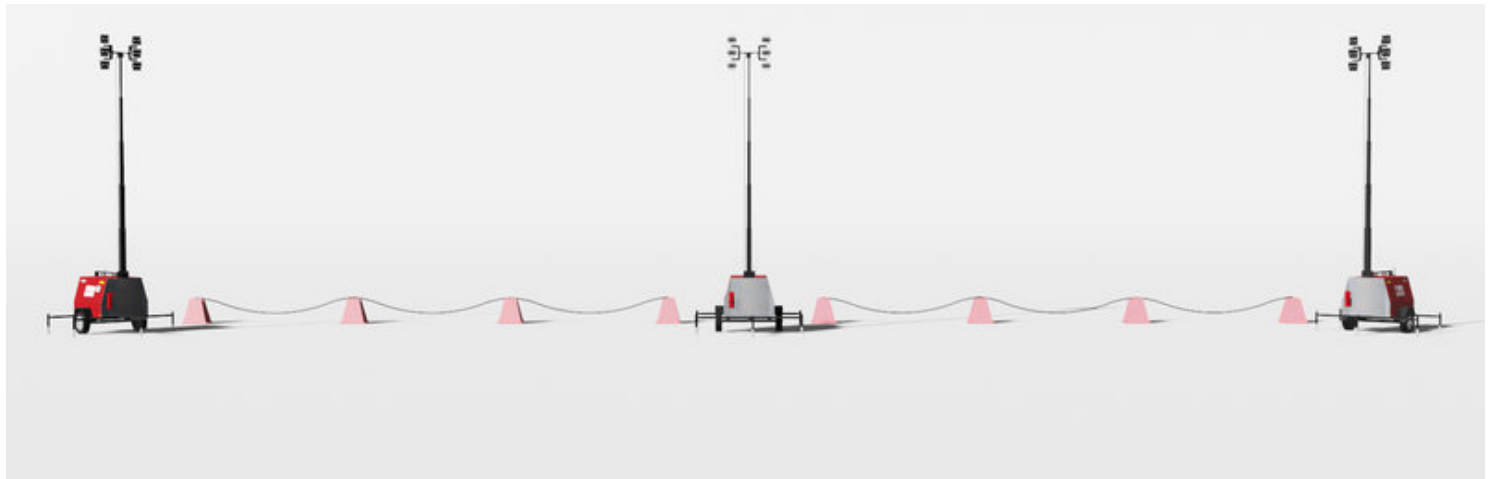
- LED lights
- Plugs for site power use



## 6 LIGHT

- LED lights
- Generator run or plug in capable (125 ft cord)
- Plugs for site power use
- Stackable

**HYBRID**





### 12 LIGHT

- LED lighting
- Generator run or plug in capable
- **Plugs for site power use**
- Large fuel storage for long run capability

*HYBRID*



### 18 LIGHT

- LED lighting
- 65 ft mast





## **EXPLOSION PROOF LIGHTS**

- Energy Efficient
- Easily Relocatable
- Designed to be installed in Zone 2 (Class 1, Div 1) hazardous locations



## **4 LIGHT**

- LED lighting
- Small units for tight areas
- Units are able to daisy chain



## **10 LIGHT**

- LED lighting
- Generator units with 1000 L fuel tanks , plugs for site power use, or Light Stand models only .
- Stackable units



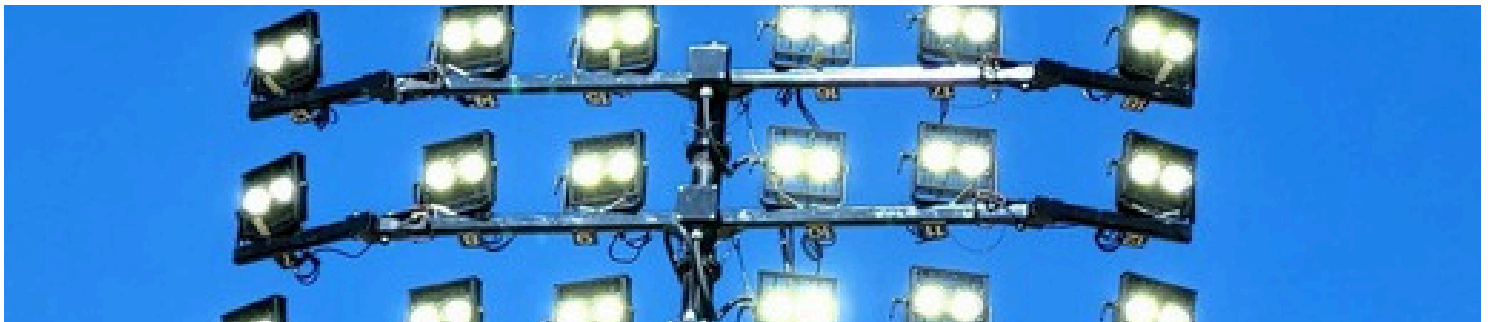
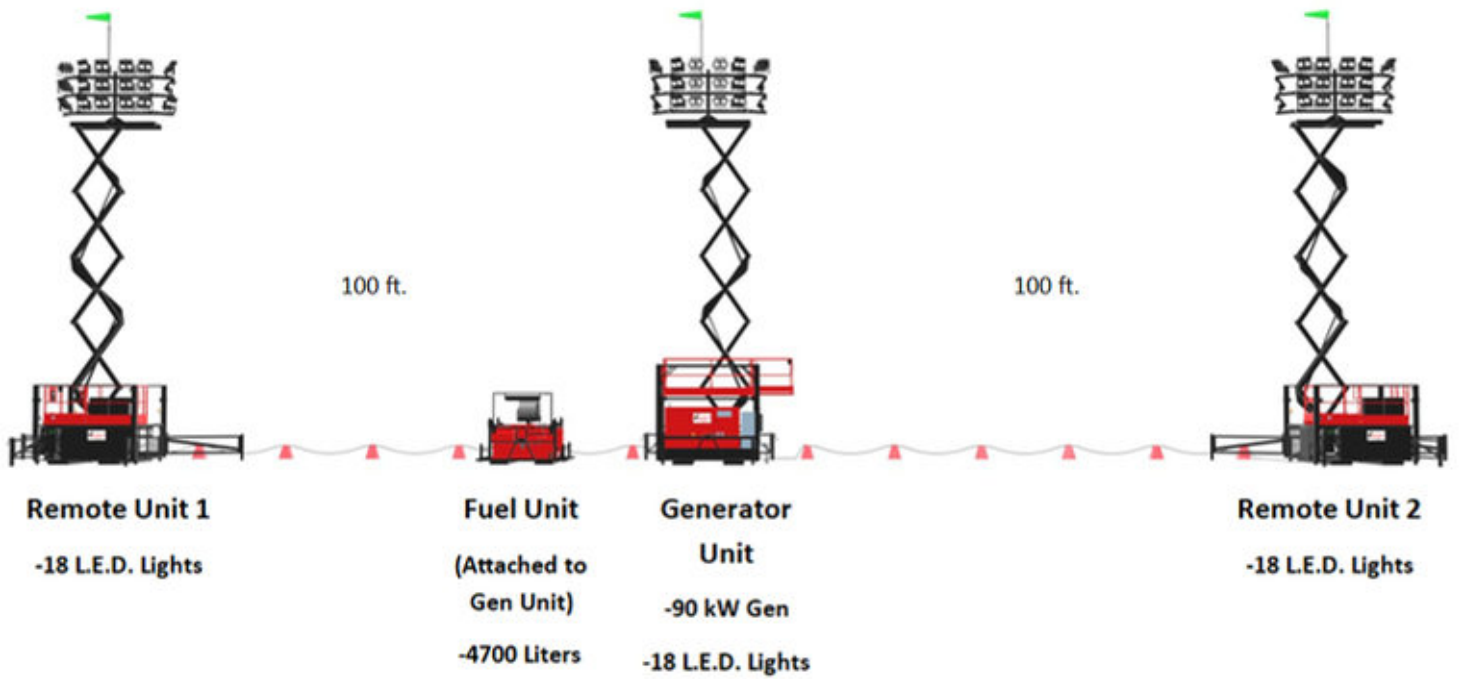


**One Engine**

**18 LIGHT**

- LED lighting
- Generator units or Light Stands
- Stackable

**54 Lights**



## COMBO UNITS

WHEELED / SKIDDED



### MOBILE COMBO SUPPORT MINI

- Bathrooms
- 25kW Power Generation
- Power Distribution
- Lighting
- Fuel Storage
- Garbage Bin



### MOBILE COMBO SUPPORT

- Large Bathrooms
- 30kW Power Generation
- Power Distribution
- Lighting
- Fuel Storage
- Oil Containment
- Garbage Compartment



### PORTA POTTY GARBAGE

- Bathrooms
- Garbage Bin



## COMBO UNITS

WHEELED / SKIDDED

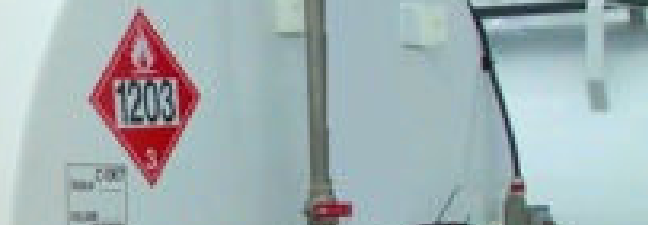


### COMBO SUPPORT UNIT

- Bathrooms
- Power & Distribution
- Lighting
- Garbage / Enviro
- Fuel



**FUEL  
STORAGE**



**2100L - 3000L**

- Double wall storage
- Fuel pump with meter
- Artic flex hose



**4700L - 20,000L**

- Double wall storage
- Fuel pump with meter
- Artic flex hose



**SLIP TANKS**

- Portable
- Included fuel pump



**ENVIRO FUEL TRAILER**

- 3000 L
- Fuel pump & hose



# ENVIRONMENTAL BINS



## CAMP BIN

- Large 25 CM bin



## EVIRO BIN

- Large bin with compartments
- Optional bathroom or oil containment attachments



## STEEL & WOOD BINS

- Large open top bins



# WATER & SEWER BATHROOMS



## DELUXE WASHCAR

- Large capacity
- Separate men & woman areas
- On board hot water
- Some units self contained



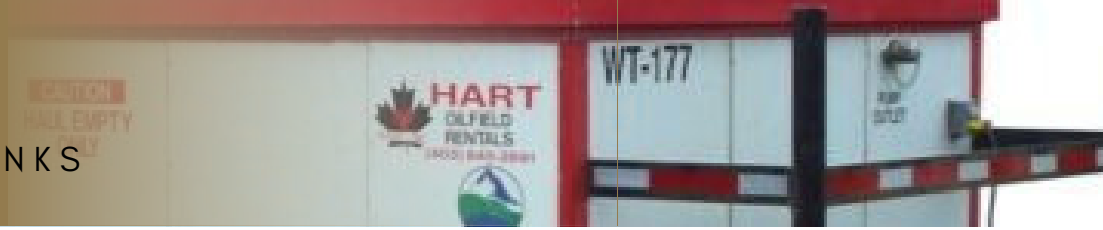
## COMBO WASHCAR

- Separate men & woman areas
- 400 gallon water storage
- On board hot water



# WATER & SEWER

## WATER HOLDING TANKS



### 10-CUBE SKIDDED

- Pump supply
- Heaters for winter use



### 10-CUBE COMBO

- Pump supply
- Heaters for winter use
- Lighting system for water level



# WATER & SEWER

## SEWER HOLDING TANKS

CAUTION  
HAUL EMPTY  
ONLY

DO NOT WALK  
ON TANK

SEWER  
TANK  
ST 172



### 5 - CUBE LOW PROFILE

- Insulated metal tank



### 10 - CUBE SKIDDED

- Lift station power supply
- Heaters for winter use
- High level alarm



### 10 - CUBE COMBO

- Heaters for winter use
- Light gauge for tank level
- High level alarm



# FIRE SUPPRESSION WHEELED



## 2300L

- Fire pump
- Hoses and fire nozzles
- Pulaski's / Shovels



## 4400L

- Fire pump
- Hoses and fire nozzles
- Pulaski's / Shovels
- BC Forest Industry specs



**FLAMELESS HEAT & AIR**  
**WHEELED - DIESEL**



FLAMELESS **HEAT** & CLEAN BREATHABLE **AIR**



**500**

- 171F output
- 600,000 BTU
- 6000 CFM



**625**

- 171F output
- 625,000 BTU
- 4500 CFM
- Optional thermostat controlled



**900**

- 180 F output
- 1,200,000 BTU
- 7200 CFM



**FLAMELESS HEAT & AIR  
TRUCKS - DIESEL**



**1200**

- 210 F output
- 1,300,000 BTU
- 8500 CFM



**2500**

- 239 F output
- 2,500,000 BTU
- 8500 CFM





### **TD650**

- NG / Propane
- 180 F output
- 650,000 BTU
- 7,200 CFM



### **ATI E150**

- 480 - 600 v
- 275 F output
- 205,000 to 515,500 BTU
- Up to 14,500 CFM



### **ATI 1800**

- 200 - 480 v
- 185 F output
- 1,800,000 BTU
- 20,000 CFM



**FLAMELESS HEAT & AIR  
VENTILATION**



**ARTIC THERM**  
International Ltd.  
A division of Enterprise Group Inc.



**BLOWERS**

- 7500 cfm
- Trailered unit



# SCAFFOLDING

## SYSTEM / TUBE & CLAMP



**\*Alberta Only\***

### SYSTEM / TUBE & CLAMP

- Erected by certified scaffolders
- Customized design for large or tight areas

### INDUSTRIES

- Wellhead
- Facility
- Construction



## SCAFFOLDING

### SCAFFOLD ACCESSORIES



#### TARPING

- Keeps the wind out and the warmth in
- Light material to allow outside sunlight or site lighting in



#### SCAFFOLD MATS

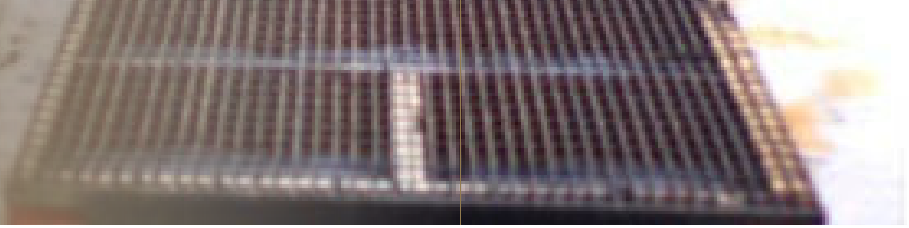
- Provides a stable base for wellhead scaffolding



#### STRING LIGHTS

- Lights up scaffolded areas
- Explosion proof and built for hazardous locations





**WALKWAYS**

- 4x20
- 8x10
- 8x20



## MISCELLANEOUS ITEMS

MISC.



### ROAD CROSSINGS

- Various widths and sizes



### PORTABLE CELL BOOSTERS

- Portable packages





### **1 TON TRUCKS**

- Service trucks for hauling equipment, trailers and site service
- Pilot truck available in BC



### **BED TRUCK**

- Tri-drive
- 18 ton knuckle picker
- Pup trailer



### **WINCH TRUCK**

- Tri-drive winch trucks
- Standard scissor deck and equipment deck trailers
- Some units have 18 ton knuckle picker





### **COMBO TRUCK**

- Ability to haul customized Combo modules
- Easy and safe setup and rigout of Combo modules



### **VACUUM TRUCK**

- Sewage transport and disposal



# SERVICES

## MISC.



### SITE SETUP & RIGOUT

- Trained field staff for equipment setup, maintenance, and rigout



### SERVICE & MAINTENANCE

- Employed mechanics, electricians, plumbers, scaffolders for service and repair of equipment



### ESG MONITORING

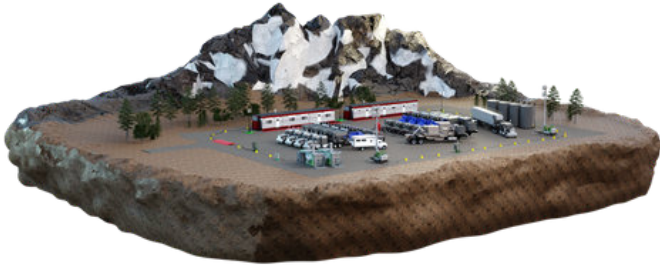
- Live Satellite tracking instrumentation on the fleet
- Proprietary operations software
- Systemic operational review and adaptation
- Emissions factorial data
- Energy utilization reporting



**SITE TOURS**

- Our suite of infrastructure & surface equipment can accommodate many applications. Natural Gas power, water transfer sites, drilling & completion sites, mining sites, crypto facilities, construction sites, and many more!

**FRAC SITE**



**WATER TRANSFER**



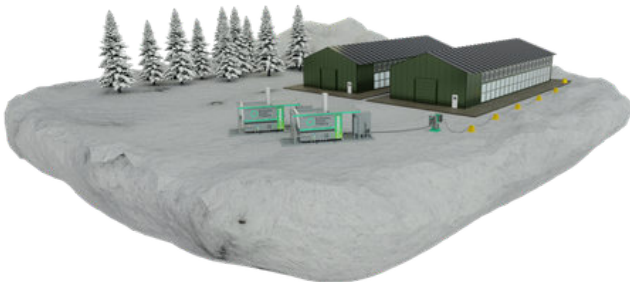
**DRILLING SITE**



**MINING SITE**



**CRYPTO MINING**



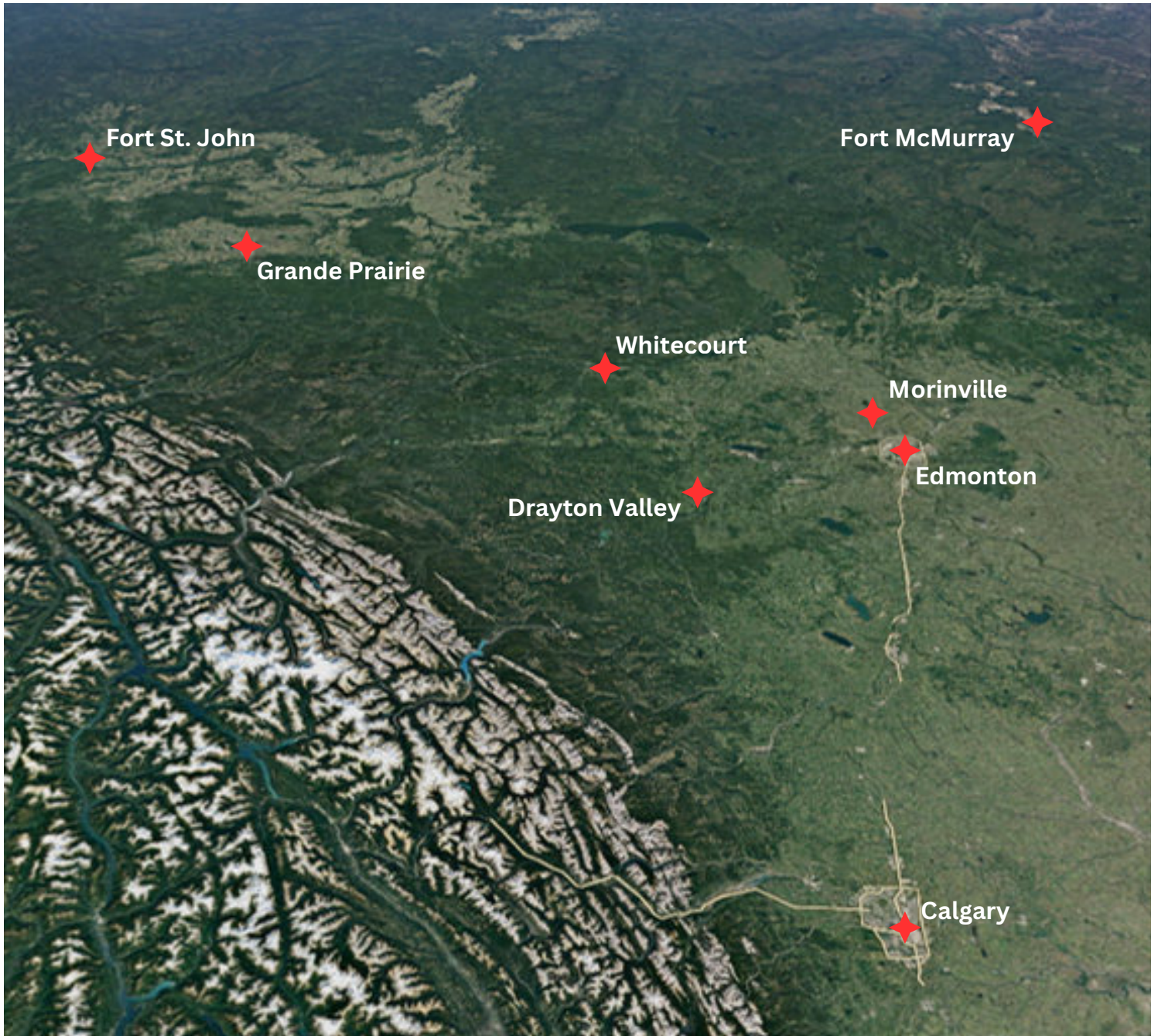
**CONSTRUCTION SITE**





## **LOCATIONS**

- Our branches are strategically located around Alberta and British Columbia that overlap service zones to give you technical and operational coverage wherever your job is.





# MEET OUR TEAM

## Evolution Power Projects



Evolution Power Projects is reinventing the way mobile power is provided on site in the interest of developing efficiencies, streamlining generator rentals management, supporting critical services and promoting natural gas alternatives.

Our Concept to Completion Approach assists our customers in evaluating their overall power demand and offers innovative, low carbon, environmentally responsible options.

## Evolution Power Solutions



Evolution Power Solutions delivers advanced turbine technology and modular microgrids that provide clean, reliable power for remote oil and gas operations across Canada. We turn your waste gas into valuable electricity.

Comprehensive power solutions designed for the demanding requirements of Canadian oil and gas operations.

## Westar Oilfield Rentals



Westar Oilfield Rentals supplies support equipment for Industrial, Oil & Gas, and Constructions Projects in the Northern British Columbia region.

Westar is a highly-regarded full-service oilfield site and infrastructure company that fulfills multiple equipment rental needs for a variety of customers, it is currently operating a fleet of over 2000 pieces of equipment.

## Hart Oilfield Rentals



Hart's current locations are strategically located throughout west central and northern Alberta. These locations have allowed Hart to establish complimentary "service circles" that slightly overlap and allow Hart to deliver oilfield site set-up services and equipment rentals efficiently to its customers as well as respond quickly to requests for service or repairs to its equipment when required. "Prompt, Professional and Safe"

## Artic Therm International



Since 1997, Artic Therm has refined and expanded its product offerings, catering not just to the Oil & Gas sector, but also reaching new industries seeking safe, contaminant-free heating solutions. Their advanced flameless heaters are a testament to their commitment to innovation and safety, boasting impressive outputs of up to 3.3 million BTU and 15,000 CFM of airflow.





# NOTES

---



# NOTES

---

# COMPANY CONTACTS

---



## Evolution Power Projects

- ☎ 250-794-6580
  - ✉ info@evolutionpower.ca
  - 🌐 www.evolutionpower.ca
- 

## Evolution Power Solutions

- ☎ 587-803-6138
  - ✉ info@evolutionps.ca
  - 🌐 www.evolutionps.ca
- 

## Westar Oilfield Rentals

- ☎ 250-263-9444
  - ✉ info@westaror.com
  - 🌐 www.westaror.com
- 

## Hart Oilfield Rentals

- ☎ 310-4278
  - ✉ info@hartoil.com
  - 🌐 www.hartoil.com
- 

## Artic Therm International

- ☎ 1-855-350-4328
- ✉ info@artictherm.com
- 🌐 www.artictherm.com